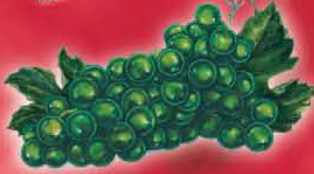
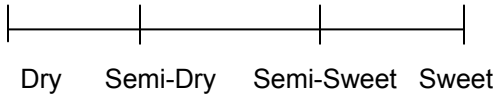


swedish hill

NIAGARA FROST



Our most aromatic white wine, Niagara Frost reminds us of walking through the vineyard on a cool fall morning when grapes are fully ripe. Luscious fresh grape aromas and a velvety smooth taste sets a new standard for how good Niagara can be. A twist-off closure insures consistent high quality and freshness.

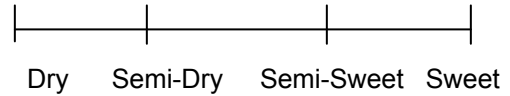


swedish hill

NIAGARA FROST

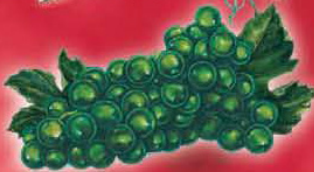


Our most aromatic white wine, Niagara Frost reminds us of walking through the vineyard on a cool fall morning when grapes are fully ripe. Luscious fresh grape aromas and a velvety smooth taste sets a new standard for how good Niagara can be. A twist-off closure insures consistent high quality and freshness.

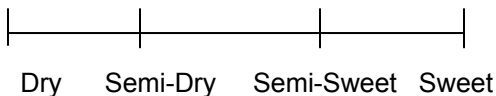


swedish hill

NIAGARA FROST

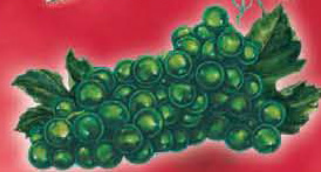


Our most aromatic white wine, Niagara Frost reminds us of walking through the vineyard on a cool fall morning when grapes are fully ripe. Luscious fresh grape aromas and a velvety smooth taste sets a new standard for how good Niagara can be. A twist-off closure insures consistent high quality and freshness.



swedish hill

NIAGARA FROST



Our most aromatic white wine, Niagara Frost reminds us of walking through the vineyard on a cool fall morning when grapes are fully ripe. Luscious fresh grape aromas and a velvety smooth taste sets a new standard for how good Niagara can be. A twist-off closure insures consistent high quality and freshness.

